



---

## *Welcome to our AUTUMN Sustainability News*

### **Sustainability week 2025**

The Sixth Form College's Sustainability Week in November focused on our 3 'R' priorities: **Reduce! Recycle! Re-use!** We also included a 4th 'R' - **RUBBISH!** Andrew and Seerat from the Student Union led a litter picking lunch around our neighbourhood. Not only is this to help improve the image of the area but also reduces the huge issue of waste. Lets keep Oldham tidy.



### *Training Shoes for Recycling*



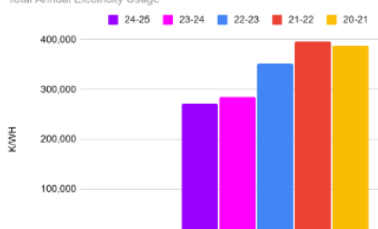
WE COLLECTED **TRAINING SHOES FOR RECYCLING** WITH JOGON. 40 PAIRS OF TRAINERS WERE TIED TOGETHER, PACKAGED UP IN SACKS AND POSTED OFF TO JOGON! Jogon is a national charity determined to get every last ounce of life out of the trainers we casually discard. With over 30 million pairs of trainers ending up in landfill every year across the globe, Jogon distribute to 15 destinations around the world, providing footwear for those in real need.



## Our 'Save Power Every Hour' Campaign

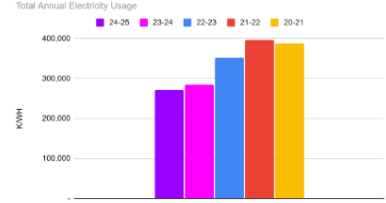
By Ellie Higginbottom

Regional Science Centre Oldham  
Total Annual Electricity Usage

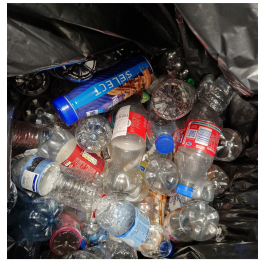


*Since the college adopted the ClearView Energy Monitoring System, our consumption of electricity has steadily declined. Each column on these graphs represents an academic year. The purple column on the left is the most recent 2024-25 data*

*Data for the main site is split into 2 areas: The Regional Science Centre, and OSFC [which is all building apart from The Regional Science Centre]. We intend to introduce a similar process for our monitoring of gas consumption. The graphs illustrate clearly our reduced energy consumption.*



Light switches around college may have stickers stuck above them, reminding everyone to switch off the lights when leaving a room, these read 'save power every hour, turn off the lights when you leave'.



Every year around 500 billion plastic bottles are used and thrown away. This is concerning for the environment due to how long they take to decompose, taking up enormous amounts of space in landfills, and also how many toxic pollutants get released into the earth's atmosphere, because of this, all students are highly encouraged to recycle their plastic bottles or even better use a reusable one.

**UK HOUSEHOLDS ARE THROWING AWAY AN ESTIMATED\* 1.7 BILLION PIECES OF PLASTIC A WEEK - THAT'S 90 BILLION PIECES PER YEAR**

\*Assuming the data from our households are typical across the UK



All around college there are separate bins clearly stating what should be thrown away into them. You can also buy a reusable water bottle from the online shop. By doing this everyone can contribute to the reduction in waste.

**and think before you print...**

**Our Paper Consumption over the past 12 months**

**1,920 boxes of A4 white 70gsm copier paper.** There are 5 reams per box (9,600 reams) and a total of 500 sheets of paper per ream (**4,800,000 sheets of paper total**)

**50 boxes of A3 white 80gsm copier paper.** There are 5 reams per box (250 reams) and a total of 500 sheets of paper per ream (**125,000 sheets of paper total**)

Plus:

- 480 boxes** recycled 80gsm paper
- 150 boxes** of A3 80gsm coloured paper
- 240 boxes** of different coloured card
- 16 boxes** of A3 250gsm white card
- 40 boxes** of A4 250gsm white card
- 12 boxes** of A3 120gsm white paper
- 18 boxes** of A4 120gsm white paper
- 20 boxes** of 100gsm white paper

A4 white paper per ream costs £1.89

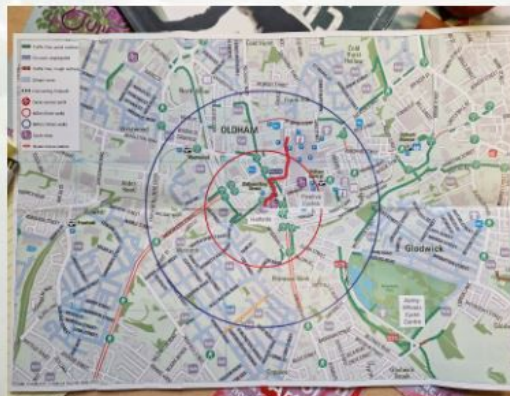
A4 Recycled paper per ream costs £2.30

## Sustainable Travel

The college has EV points up and running to encourage electric car use for staff. We also encourage staff and students to use public transport, walk, or cycle as part of their commute to college.



REDUCE YOUR CARBON  
FOOTPRINT



Take steps towards net zero carbon and walk, cycle or get public transport to and from college. This not only makes the air cleaner, but keeps our streets safer.

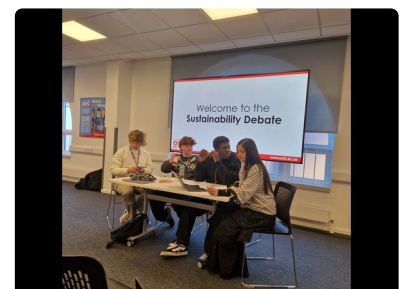


## COP 30 AT OSFC



COP 30 [30th Conference of the Parties] leads the United Nations Convention on Climate Change, which just so happened to be at the same time as our Sustainability Week! To celebrate this coincidence, our Debate Club students [Alex, Ewan, Tom and Seerat] hosted a debate: **Can AI save the planet? Are we looking at an ecological solution, or part of the problem?**

The debate was lively and very well argued, with both sides drawing on scientific data and public opinion to sway the discussion in their direction. It was a challenging and close run contest, with the proposers winning the argument (just!) - so perhaps AI can save us!



## Sustainable Cities

We also hosted a careers session with Alex Vogel, Senior Development Manager at Muse - the urban development company responsible for the exciting transformation of Oldham's town centre. He spoke to students about urban planning, the impact of regeneration and the routes into careers within architecture



## Interested in a Green Career?

<https://targetjobs.co.uk/careers-advice/career-ideas/green-careers-find-graduate-job-helps-environment>

<https://www.britishcouncil.org/climate-connection/be-inspired/green-careers>

<https://www.greencareershub.com/>

## Are You Green?

**Guide to being a Sustainable Student**  
Every little counts, this is how YOU can make a difference

**GOOD MORNING!**  
If everyone in the UK turned off the tap while brushing their teeth we could save 1584,000,000 litres (1584 megalitres) a day  
YOU would save 10 to 12 litres of water per day

**FINAL CHECKS!**  
YOU can unplug TVs, chargers, laptops, and lamps when they're finished charging or not in use to avoid phantom power draining energy. This helps lower energy bills too!

**COMMUTING!**  
just one bus can take up to 75 cars off the road! YOU using the bus may not feel sustainable but each journey saves 150-180 grams of CO2 per kilometre

**STUDY SUSTAINBALLY!**  
When YOU print, make sure you print double sided and as sparingly as possible!

**A MESSAGE FOR YOU!**  
Knowing how you can make a difference and save our planet is the first piece. Saving it is up to YOU

## Make your Green Commitment Now



## Sign in to your Google Account

You must sign in to access this content

Sign in

# Greater Manchester Plastic Recycling

**You can recycle plastic pots, tubs & trays in your mixed recycling bin.**



- ✓ Plastic pots (e.g. yoghurt, soup, cosmetics etc)
- ✓ Plastic tubs (e.g. margarine, laundry powder, chocolates etc)
- ✓ Plastic trays including black plastic trays (e.g. raw and cooked meat, fruit and veg punnets etc)
- ✗ Plastic film or cling film
- ✗ Crisp packets
- ✗ Plastic bags, packaging or other soft plastics
- ✗ Pet food pouches
- ✗ Hard Plastics

**DID YOU KNOW... THE EUROPEAN UNION INTENDS TO BAN SINGLE USE PLASTIC BY 2030**

## **Race to Zero**

Race to Zero is a global campaign that invites colleges and universities to commit to carbon reducing targets. As signatories of Race to Zero we are actively seeking to reduce the college's carbon footprint. Click on the logo to read our progress so far



**Next term look out for**

## **SUSTAINABLE DEVELOPMENT GOALS**

**THE BIG PLASTIC COUNT and  
FOOD WASTE WEEK IN MARCH**



From January we will be introducing one of the 17 Sustainable development Goals each week. Look out for information around college and through tutorial about what they are and the impact being made